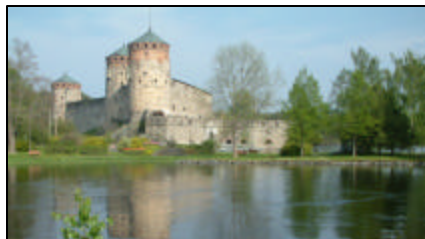


PROGRAM SOURCE INTERNATIONAL

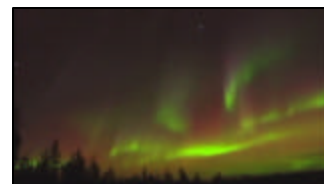
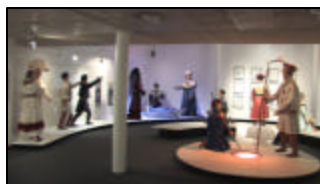
"HISTORY & LEGENDS OF FINLAND" LECTURE PRESENTATION



Our History & Legends Adventure of Finland begins in its capital city, Helsinki. During this seven day tour, the television cameras reveal the sights and sounds of this almost 100 year old new republic. Twenty five percent of Finland's 5.5 million people live in Helsinki. The city has many universities and one dating back to 1640. Helsinki is the center of high fashion and cultural institutions. Finland was controlled by Sweden for 600 years and 100 years under the Czars of Russia. After WWII, the country made a strong comeback economically, even though it has a 600 mile border with Russia. Finlanders experience an 80% income tax, receive high wages and currently have low unemployment. Our lecture & visual presentation covers city and country life, religion, education, government, the Olympics, the World War years, outdoor markets, the composer Johan Sibelius, plus visits to Cathedrals and the Rock Church, Finnish National Theater, and Island Fortress. There are Castles in Finland built by the Swedes in the 15th Century. The middle region of Finland is farm country. We also explore the National Museum of Finland and the Central Railroad Terminal, both designed in part by Eliel Saarinen. .



From Helsinki, we fly northward over the mountains, glaciers and ski resorts to the village of Ivalo in Lapland (Sami county). This village is about 150 miles north of the Arctic Circle. We are in Reindeer country. The Ivalo area has a human population of 4,000 and 25,000 reindeer. Traveling further north we visit the Sami Museum called SIIDA, which is the preservation center of Sami artifacts. The Sami people are a joy to meet. Our cameras also captured a visit to a Reindeer farm and dining with a Sami family for an evening meal. The finale of the lecture is the spectacular display of the Northern lights. This 60 minute adventure was recorded in the HD television format. If you would like more information about our lectures, contact Al or Dave Eicher at 248-333-2010 or email al@program-source.com. You can also visit us on the web at www.program-source.com.



www.program-source.com

248-333-2010